

Saint Mary School

2019-2020 School Year

Tuition Policy/Financial Matters

Parents/guardians are obligated to pay tuition in order to obtain educational services for their children. It is the parent's/guardian's responsibility to maintain their financial commitments to the school. In the event of a financial hardship resulting in non-payment, you must contact the principal. The school may, but is not obligated to, send reminders or other notices regarding outstanding bills. Failure to make payments when due, or to make arrangements with the school for payment of delinquent obligations, may result in the termination of RenWeb or discontinuation of educational services to your child, possibly leading to disenrollment. In those cases where students are in eighth grade, documents including transcripts and diplomas will not be provided if you have a delinquent balance with the school. All present year tuition must be paid in full before the last day of the school year or the student's placement for the upcoming school year will not be guaranteed. Unpaid bills may be referred to a collection agency. Costs associated with the collection will be added to the parent/guardian fees. There is no tuition responsibility for withdraw prior to June 30th for the upcoming school year. For withdraws on or after July 1, please see policy on next page.

Tuition payments are collected monthly through FACTS Tuition Management Services. Tuition is paid by automatic deduction from either your checking or savings account. FACTS will also accept payments using MasterCard, Discover or American Express. Please note there is a 2.85% convenience fee charged to the credit card holder. Confidentiality of all account information is guaranteed. Payments are deducted on the 5th or the 17th of each month beginning in July and ending in April. A late fee of \$30.00 will be assessed to your account if any payment is not received within 10 days from the payment due date. FACTS will charge a \$30.00 failed payment fee for any attempt that fails AND they will make a total of three attempts. New admissions during school year will be required to spread their payments over remaining months through April. All initial questions regarding the FACTS Tuition Program should be made to Mary Baron (629-6190 ext.21) in the Finance Office.

Tuition may also be paid in full through **FACTS Tuition only** and payment is expected before June 15th for the next school year. A late fee will be assessed if payment is not received by June 30th.

Tuition Assistance: Applications for tuition assistance must be done on-line only through FACTS. There is a \$15 non-refundable application fee to FACTS to apply for assistance.

Tuition Refund Policy

Grades K-8 Refund Policy

In the event of a student leaving St. Mary School during the school year (1st day of school to the last day of school) or during the months of July and August:

1-If tuition has been PAID IN FULL, based on the time of withdraw, only a percentage of tuition will be refunded. See schedule below for the tuition amount that will be owed (therefore not refunded if paid in full) to St. Mary School at time of withdraw.

2- If tuition payments are being done MONTHLY (July-April) or based on the schedule agreed upon at time of enrollment, a percentage of the total amount of tuition for the year will be owed/due to St. Mary School (see table below for specific dates)—there will be no refunds of tuition already paid in the prior months to the withdraw

There is no tuition responsibility for withdraw prior to June 30th for the upcoming school year. For withdraws on or after July 1st, please see policy below.

Withdraw/Transfer Prior to:	% Annual Tuition Refundable If paid in full	% Annual Tuition Owed
August 1	90%	10%
September 1	80%	20%
October 1	70%	30%
November 1	60%	40%
December 1	50%	50%
January 1	40%	60%
February 1	30%	70%
March 1	20%	80%
April 1	0%	100%

Grades K-8 Partial Year Policy

In the event of a student enrolling at St. Mary School during the year, tuition is due to the school, according to the following schedule:

Enrollment Prior to:	% Annual Tuition Owed
Up to September 15	100%
October 1	90%
November 1	80%
December 1	70%
January 1	60%
February 1	50%
March 1	40%
April 1	30%
May 1	20%

Pre-School Programs

In the event of a student leaving St. Mary School during the school year (1st day of school to the last day of school) or during the months of July and August:

1-If tuition has been PAID IN FULL, based on the time of withdraw, only a percentage of tuition will be refunded. See schedule below for the tuition amount that will be owed (therefore not refunded if paid in full) to St. Mary School at time of withdraw.

2- If tuition payments are being done MONTHLY (July-April) or based on the schedule agreed upon at time of enrollment, a percentage of the total amount of tuition for the year will be owed/due to St. Mary School (see table below for specific dates)—there will be no refunds of tuition already paid in the prior months to the withdraw

There is no tuition responsibility for withdraw prior to June 30th for the upcoming school year. For withdraws on or after July 1st, please see policy below.

For late enrollees, please see K-8 partial year policy from previous page.

Withdraw/Transfer Prior to:	% Annual Tuition Refundable If paid in full	% Annual Tuition Owed		
August 1	90%	10%		
September 1	80%	20%		
October 1	70%	30%		
November 1	60%	40%		
December 1	50%	50%		
January 1	40%	60%		
February 1	30%	70%		
March 1	20%	80%		
April 1	0%	100%		

If there is a change in the number of days a student is enrolled in preschool, the new tuition rate will become effective on the first of the month following the change. There will be no refunds of prior monies paid or increases in the month of change.

Note: For K-8 and Pre-School, registration and other fees are due regardless of date of enrollment.

Tuition Rates are determined by the Finance Committee based on information provided by the Diocesan Office. There is a Catholic and Non-Catholic tuition rate. The definition of each category is below:

Catholic: Parent/Guardian must be registered in a Catholic parish and the child must have a valid Baptismal certificate.

Non-Catholic: Religion other than Catholic. Greek Orthodox will be considered Non-Catholic. Children must still participate in Religion classes and participate in Liturgical events. Non-Catholic students participate in sacramental classes but are not eligible to make the sacrament.

ADVANCEMENT NEWS!

- THANK YOU to all those who donated to our Annual Fund during our 2nd Annual Philanthropy Week as well as throughout this year. It has been a great success. The students, faculty, staff and families appreciate all of the support from our many constituents including current families, faculty, staff, alumni, alumni parents, school board members, grandparents, Our Lady of Peace parishioners and friends of St. Mary School.
- Donations are still being accepted. We have not reached our Philanthropy Week goal of \$5,000 as of yet. If you would like to donate to the St. Mary School Annual Fund, please visit our website at www.smarys.org and you can find a donation form under Giving as well as on today's on-line communication folder. You can also Donate-On-Line by clicking the donate-on-line button on the bottom right side of the home page of our website. For more information, please contact Jackie Kern in the Advancement Office at advancementoffice@smarys.org or 856-629-6190 ext. 34.
- You can now view St. Mary School teachers vs. parents appearance on Fox 29's The Classroom on You Tube. View it on: **YouTube:** <https://www.youtube.com/theclassroom>

THANK YOU to ALL those who helped with our appearance on The Classroom, our Fox 29 appearance during Race for Education, and the many admission efforts throughout the year from tours, to Open Houses, speaking at Mass, visits to Religious Education classes, Monroe Twp., Halloween Parade, phone calls and emails, mentoring, parent and student ambassadors, Williamstown Chamber of Commerce breakfast, community and parish events, videos, and much, much more. You are all most appreciated and I am grateful for all that you do for the success of St. Mary School. You are all in my daily prayers.

GOD BLESS!

---- Jackie Kern

HELP WANTED

The SMS School Board is looking for committee members for the following subcommittees. Please prayerfully consider our request and complete the form at the bottom of the page by June 7, 2019.

Thank you!

Finance Committee

Review monthly financials to plan
Review annual budget
Help with variance analysis
Provide guidance or input when necessary

Alumni Committee

Find graduates and introduce them to the Facebook Group
Help with planning of the 70th anniversary of the school events
Engage alumni to take a more active role in the school – career day, etc
Help create statistics on graduates - high school, college, career, mailing list

Advancement Committee

Help with Open Houses scheduled monthly
Assist with other recruitment and retention events
Fundraising
Participate in community and parish events to represent our school

Education Committee

Assistance with Science Exhibit generally held in March – availability on the day and evening of event, help with set-up, break down, assist with student projects as needed, work in conjunction with the chairperson.

SMS School Board Subcommittee Interest Form

Name _____

Phone Number _____

Email address _____



Committee(s) interested in working on _____



SAINT MARY SCHOOL

JUNE 2019



SUNDAY	MONDAY	TUESDAY	WEDNESDAY	THURSDAY	FRIDAY	SATURDAY
						1 Mass Schedule 4:00 p.m.
2 Mass Schedule 7:30 a.m. 9:00 a.m. 10:30 a.m. 12:00 p.m. 6:00 p.m.	3 Band	4 Last SCRIP Order	5 Ministry of Student Leadership 2:45 – 4:00 Volunteer Wine/ Cheese 7:00 pm Church/MH	6	7 1:00 Dismissal Faculty Mtg. 9:15 Mass 8 th Grade Awards Dinner 6:00 pm AH 8 th Grade Party following dinner	8 Mass Schedule 4:00 p.m.
9 Mass Schedule 7:30 a.m. 9:00 a.m. 10:30 a.m. 12:00 p.m. 6:00 p.m.	10 Field Day  8 th Grade Graduation 7:00 pm Church 	11 Moving Up Day 1:15 pm Garden Club Grades 1-8 2:45-4:00	12 Kindergarten Closing Ceremony 1:30 AH	13 Last Day of School 10:30 Dismissal (No Aftercare) Prayer Service 9:15 followed by Academic Assembly Report Cards in RenWeb	14 Summer Vacation Begins	
	<i>Our Lady of Peace Carnival is Monday, June 24th – Saturday, June 29th</i>					



June

Elem. Lunch Menu St Mary's School

DAILY ALTERNATES:
Chex Cereal & Yogurt **GF**
(Chicken Nuggets)
PB & J Sandwich **V**

Choose 1 Entrée.
(3 Daily Specials & 2 Daily Alternates for the Month)
Lunch Includes:
Protein ~ Grain ~ Fruit
Veggie ~ Milk
Choose at least 3 out of 5 components.
You must choose at least 1 fruit or veggie.
You may take 2 Fruit & 2 Veggie Choices!

Daily Fruit Offerings:
Fresh, Cupped, 100% Juice
All Salads Come With a Grain.

We Use Whole Grain Products!

V = Vegetarian Ingredients **GF** = Gluten-Free Ingredients

NEW Meatless Monday

Fun Flavors Tuesday!
AKA: Taco Tuesday, Mexican, Asian, Italian

Wacky Wednesday!
A School Favorite! The random category!

Chicken Lover's Thursday!
Everything & Anything CHICKEN!

Pizza Lover's Friday!
Cheesy Pizza By The Slice!

Lunch Prices: Regular Lunch \$2.85 Extra
Entrée: \$1.75 Reduced: \$0.40 Water: \$0.60
Milk: \$0.60 *Menu subject to change.
Food Service Director: Debbie Spasari
smw@nsfm.com Phone: 856-629-6419

Milk: Skim White, Skim Chocolate, Skim Strawberry, 1% White, Lactaid

This institution is an equal opportunity provider.



Monday-June 3	Tuesday-June 4	Wednesday-June 5	Thursday-June 6	Friday-June 7
Baked BBQ Chicken w/Dinner Roll Cheeseburger on a Bun Buffalo Chicken Salad <u>Sides:</u> Veggie Side Taco Hummus w/ Tortilla Chips	Nacho's Grande w/chips & Fixins Ham & Cheese Sandwich On bread <u>Sides:</u> Veggie Side Carrots w/ Taco Hummus	Turkey & Cheese On a Torpedo Roll Chicken Cheesesteak Fiesta Taco Salad <u>Sides:</u> Veggie Side Cucumbers w/ Ranch	Popcorn Chicken w/Breadstick Chicken Patty on a Bun <u>Sides:</u> Veggie Side Broccoli Bites w/ Ranch	Pizzeria Pizza By the Slice V Trix Yogurt & Bagel Tuna Hoagie or Salad V <u>Sides:</u> Garden Salad Mixed Patch w/ Ranch
Monday-June 10	Tuesday-June 11	Wednesday-June 12	NO LUNCH SERVED!	Friday-June 14
Field Day PTA Sponsored Hot Dog Lunch	Chef's Choices Served Buffet Style Ham & Cheese Sandwich <u>Sides:</u> Veggie Side Carrots w/ Taco Hummus	Chef's Choices Served Buffet Style Ham & Cheese Sandwich <u>Sides:</u> Veggie Side Cucumbers w/ Ranch	HAPPY LAST DAY OF SCHOOL	



St. Mary's Scrip Program

May 28, 2019

SMS Families,

The last regular scrip order for the school year will be June 4 2019. Thank you to everyone who purchased scrip this year.

Just a reminder that SCRIP is available throughout the summer. I will be placing summer orders on June 18th, July 9th, July 23rd, August 6th, and Aug 20th. I will have ShopRite, Acme, Wawa, Walmart/Sam's Club, Target, and Kohl's available daily. Along with a limited supply of some restaurants/stores. Please contact me any time.

Thank you for another great year!

**Keep in mind you can use Kohl's gift cards to pay your Kohl's credit card bill in store. This allows you to shop when you have a coupon or at your convenience, then you can get your Kohl's Scrip to pay your bill.

You can contact me anytime with any questions or issues.

Christine Eberhardt

Scrip Coordinator

(609) 276-0030 Call or Text
scripcoordinatorsms@gmail.com

THANK YOU TO ALL WHO HAVE REGISTERED FOR
JV AND VARSITY CHEERLEADING! WE ARE
LOOKING FORWARD TO A GREAT SEASON!

JV COMPETITION SQUAD

Riley Rae Cercioglu
Lilyana Ciavardone
Kathleen Engel
Ajia Hall
Olivia Hensh
Alyssa Kraybill
Lyla Lenhardt
Lauren Lyons
Lucy Peacock
Laney Reilly
Rebecca Rouse
Johanna Trampe

VARSITY COMPETITION SQUAD

Lyla Bottino
Nola Byrne
Abigail Carl
Alyssa King
Ava Liberi
Jacqueline Lyons
Morgan Mankoski
Savanna Marsico
MaryRose Mohr
Raina Raubertas



**SAVE THE DATE: UNIFORM FITTINGS WILL BE JUNE 3RD
IN ROOM K2. SEE EMAIL FOR DETAILS.**

**IF YOU HAVEN'T YET REGISTERED AND ARE INTERESTED IN OUR 2019-2020
COMPETITION CHEERLEADING PROGRAM, PLEASE CONTACT:**

Nicole Lenhardt, SMS Cheer Coordinator
Nicole092405@aol.com or 609-204-0782

UNIFORM EXCHANGE

PTA WILL HOLD A UNIFORM EXCHANGE
ON MONDAY, JULY 22, 2019 FROM
5:00 - 7:00 PM

IN **MARIAN HALL (CHURCH BASEMENT)**.

YOU DO NOT NEED TO BRING A UNIFORM
TO PARTICIPATE.

IF YOU HAVE ITEMS TO DONATE, PLEASE
DROP THEM OFF TO THE MAIN OFFICE
BEFORE THE WEEK OF JULY 15TH.

**SUMMER HOURS FOR THE MAIN OFFICE
BEGINNING THE WEEK OF JUNE 17TH ARE
TUESDAY – THURSDAY 9:00 AM – 12:00 PM.**

SAVE THE DATE

UNIFORM POP-UP SHOP

ST. MARY SCHOOL

JOIN US FOR AN IN-SCHOOL UNIFORM SALE AT ST. MARY SCHOOL, A COMPLETE LINE OF SAMPLES WILL BE AVAILABLE FOR TRY ON AND WILL BE SHIPPED DIRECTLY TO YOUR HOME WITH FREE SHIPPING.

PLEASE SIGN UP TO ATTEND:

http://bit.ly/fo_nj390_19

DATE & TIME:

July 31, 2019 | 10:00 AM - 2:00 PM

IF YOU ARE NOT ATTENDING THIS EVENT, PLEASE BE SURE TO ORDER YOUR UNIFORM BY AUGUST 1, TO ENSURE DELIVERY BY THE FIRST DAY OF SCHOOL!

Check out your school's custom shop site to view uniform options, pricing, or to place an order:

www.flynnohara.com/school/NJ390

Visit us at our closest servicing retail store:

FlynnO'Hara
2240 W. Marlton Pike
Cherry Hill NJ 08002
856-931-8838

ABOUT FLYNNOHARA

FlynnO'Hara Uniforms is a Philadelphia-based supplier and retailer of high-quality school uniforms and gym wear. We are family owned and operated, servicing over 1500 schools across the United States.



WARRANTY INFO

We're so confident in our products that we offer a School Year Guarantee: If you're not satisfied with the way an item is holding up within a year of purchase, we'll replace it.

CONTACT FLYNNO'HARA: 800-441-4122



WWW.FLYNNOHARA.COM

Girls 2019 Uniform Pricing

NJ390

Girls Winter Uniform K-2

Royal & Powder Plaid Empire Waist Jumper CHILDS \$47.25
Black Cotton/Lycra Modesty Short YOUTH \$14.00
Black Cotton/Lycra Modesty Short ADULT \$16.00
Blue Short Sleeve Peterpan Collar Blouse YOUTH \$15.25
Blue Long Sleeve Peterpan Collar Blouse YOUTH \$16.25
Navy V-Neck Sweater Vest w/School Logo XXS-YS \$30.75
Navy V-Neck Sweater Vest w/School Logo YM-YXL \$30.75
Navy Flat Front Girls Slacks 04-06XC \$24.75
Navy Flat Front Girls Slacks 10-16R \$27.75

Girls Winter Uniform 3-4

NAVY GIRLS SLACKS ARE AN OPTIONAL ITEM.
Royal & Powder Blue Plaid 2-Pleat Skort ALL SZS \$44.50
Blue Short Sleeve Buttondown Collar Shirt YOUTH \$20.75
Blue Short Sleeve Buttondown Collar Blouse ADULT \$23.75
Blue Long Sleeve Buttondown Collar Shirt YOUTH \$22.25
Blue Long Sleeve Buttondown Collar Blouse ADULT \$24.75
Navy V-Neck Sweater Vest w/School Logo XXS-YS \$30.75
Navy V-Neck Sweater Vest w/School Logo YM-YXL \$30.75
Navy V-Neck Sweater Vest w/School Logo AS-AXL \$33.25
Navy Flat Front Girls Slacks 10-16R \$27.75
Navy Flat Front Girls Slacks JR \$31.75

Girls Winter Uniform 5-8

NAVY GIRLS SLACKS ARE AN OPTIONAL ITEM.
Royal & Powder Blue Plaid 2-Pleat Skort ALL SZS \$44.50
Blue Short Sleeve Buttondown Collar Shirt YOUTH \$20.75
Blue Short Sleeve Buttondown Collar Blouse ADULT \$23.75
Blue Long Sleeve Buttondown Collar Shirt YOUTH \$22.25
Blue Long Sleeve Buttondown Collar Blouse ADULT \$24.75
Navy V-Neck Sweater Vest w/School Logo XXS-YS \$30.75
Navy V-Neck Sweater Vest w/School Logo YM-YXL \$30.75
Navy V-Neck Sweater Vest w/School Logo AS-AXL \$33.25
Navy Flat Front Girls Slacks 10-16R \$27.75
Navy Flat Front Girls Slacks JR \$31.75

Girls Winter Uniform K-8

TIGHTS ARE MANDATORY FOR GIRLS IN GRADES 6-8 & OPTIONAL FOR K-5.

Navy V-Neck Cardigan Sweater w/School Logo XXS-YS \$34.00
Navy V-Neck Cardigan Sweater w/School Logo YM-YXL \$34.00
Navy V-Neck Cardigan Sweater w/School Logo AS-AXL \$37.50
Navy V-Neck Pullover Sweater w/School Logo XXS-YS \$32.75
Navy V-Neck Pullover Sweater w/School Logo YM-YXL \$32.75
Navy V-Neck Pullover Sweater w/School Logo AS-AXL \$37.25
Navy V-Neck Pullover Sweater w/School Logo XXL-XXXL \$41.25
Navy Opaque Nylon Knee-Hi S-M-L \$5.50
White Opaque Nylon Knee-Hi S-M-L \$5.50
Navy Orlon Knee-Hi S-M-L \$5.50
White Orlon Knee-Hi S-M-L \$5.50
Navy Opaque Tights CHILDS \$9.25
Navy Opaque Tights JUNIORS \$10.00
White Opaque Tights CHILDS \$9.25
White Opaque Tights JUNIORS \$10.00
Black Opaque Tights CHILDS \$9.25
Black Opaque Tights JUNIORS \$10.00
Navy Ribbed Tights CHILDS \$11.25
Navy Ribbed Tights JUNIORS \$13.75
White Ribbed Tights CHILDS \$11.25
White Ribbed Tights JUNIORS \$13.75
Black Ribbed Tights CHILDS \$11.25

Girls 2019 Uniform Pricing

NJ390

Black Ribbed Tights JUNIORS \$13.75
03 Royal & Powder Blue Plaid Scrunchies ONE SIZE \$6.50
Girls Spring/Fall Uniform K-8
Blue Short Sleeve Banded Bottom Shirt w/School Logo YOUTH \$24.50
Blue Short Sleeve Banded Bottom Shirt w/School Logo SM-XXLG \$28.50
Navy Girl's Twill Walking Shorts 03-06XR \$22.75
Navy Girl's Twill Walking Shorts 07-16R&S \$24.75
Navy Girl's Twill Walking Shorts 3-23JR \$25.75
Girls Gymwear Uniform K-8
Navy Gym Tee Shirt w/School Silkscreen YOUTH \$11.00
Navy Gym Tee Shirt w/School Silkscreen ADULT \$11.50
Navy Micromesh Nylon Gym Shorts YOUTH \$15.50
Navy Micromesh Nylon Gym Shorts ADULT \$16.50
Navy Heavy Weight Sweatshirt w/School Silkscreen YOUTH \$17.50
Navy Heavy Weight Sweatshirt w/School Silkscreen ADULT \$20.00
Navy Heavy Weight Sweatpant YOUTH \$16.75
Navy Heavy Weight Sweatpant ADULT \$19.25
Boys Winter Uniform K-6
Royal & Powder Blue Plaid Boy's Tie 11-14-52 \$8.75
Boys Winter Uniform 5-8
Navy Maroon and Silver Striped Tie 11-14-58 \$15.00
Boys Winter Uniform K-8
Navy Twill Pants 04-07R&S \$25.75
Navy Twill Pants 08-12R&S \$27.75
Navy Twill Pants 14-22R&S \$28.75
Navy Twill Pants 8H-22H \$29.50
Blue Short Sleeve Buttondown Collar Shirt YOUTH \$20.75
Blue Short Sleeve Buttondown Collar Shirt HUSKY \$21.25
Blue Long Sleeve Buttondown Collar Shirt YOUTH \$22.25
Blue Long Sleeve Buttondown Collar Shirt HUSKY \$23.25
Navy V-Neck Sweater Vest w/School Logo XXS-YS \$30.75
Navy V-Neck Sweater Vest w/School Logo YM-YXL \$30.75
Navy V-Neck Sweater Vest w/School Logo AS-AXL \$33.25
Navy V-Neck Pullover Sweater w/School Logo XXS-YS \$32.75
Navy V-Neck Pullover Sweater w/School Logo YM-YXL \$32.75
Navy V-Neck Pullover Sweater w/School Logo AS-AXL \$37.25
Navy V-Neck Pullover Sweater w/School Logo XXL-XXXL \$41.25
Black/Brown Reversible Leather Belt 22-36" W \$10.75
Black Crew Socks S-M-L \$5.50
White Crew Socks S-M-L \$5.50
Black Lace-Up Sneaker 10H-3 \$48.50
Black Sneaker 3/-7 \$48.50
Boys Spring/Fall Uniform K-8
Navy Boy's Twill Walking Shorts 03-07R \$23.00
Navy Boy's Twill Walking Shorts 08-14 \$25.00
Navy Boy's Twill Walking Shorts 26H-36H \$26.75
Navy Boy's Twill Walking Shorts 27W-32W \$26.50
Navy Boy's Twill Walking Shorts 33W-50W \$26.50
Blue Short Sleeve Polo Shirt w/School Logo YXS-YXL \$21.75
Blue Short Sleeve Polo Shirt w/School Logo SM-XLG \$24.00
Boys Gymwear Uniform K-8
Navy Gym Tee Shirt w/School Silkscreen YOUTH \$11.00
Navy Gym Tee Shirt w/School Silkscreen ADULT \$11.50
Navy Micromesh Nylon Gym Shorts YOUTH \$15.50
Navy Micromesh Nylon Gym Shorts ADULT \$16.50
Navy Heavy Weight Sweatshirt w/School Silkscreen YOUTH \$17.50
Navy Heavy Weight Sweatshirt w/School Silkscreen ADULT \$20.00
Navy Heavy Weight Sweatpant YOUTH \$16.75
Navy Heavy Weight Sweatpant ADULT \$19.25



SMS FIELD DAY 2019



On Monday, June 10th we will have our FIELD DAY.

It is a day of fun, enjoyed by all students.

Some specifics of the day include:

WHAT TO WEAR... Students wear their gym uniform and sneakers as they would on gym day. **In case of a sunny day, please apply sunscreen.**

WHAT NOT TO WEAR...Students are **NOT** permitted to wear bandanas, eye black or hair coloring, etc. Students must follow dress code.

SCHEDULE FOR THE DAY ... 8:30 a.m. to 2:10 p.m.

WHAT TO EAT FOR LUNCH...Students will be treated to a hot dog lunch by our PTA. If your child does not want a hotdog, they may bring in their own lunch.

WE NEED YOUR HELP!

Any parents/guardians, grandparents, or siblings of students who are in college who can volunteer any amount of their time on Field Day, please return the form below to the **ATTENTION OF MISS CONNELLY.**

Without you we cannot have Field Day!!

If you have any questions, call the main office at 856-629-6190.



FIELD DAY VOLUNTEER

Name: _____

Phone: _____

Students' Name and Grade: _____

(Please come through main office to check in)

YEARBOOKS

May 2019

Dear Parents/Guardians:

The 2018 – 2019 St. Mary School yearbooks will be arriving soon. The eighth grade yearbook staff worked very hard and diligently on this project.

If you are interested in purchasing a yearbook, please fill out the bottom of this form and return it along with your cash or check made payable to St. Mary School in an envelope marked “Yearbook”. The price is \$21.00 per yearbook. **The yearbooks will be sent home in June.**

Thank you!

YEARBOOK ORDER FORM

Student's Name _____ Class _____

Student's Name _____ Class _____

Student's Name _____ Class _____

Number of Books _____ Amount enclosed _____

Need a tutor for the summer?



Some students need a summer connection with learning to be more successful in September. Teachers are available for summer tutoring. They include:

Mrs. Yusra Hence (all subjects for students entering grades 1st and 2nd) email K2@smarys.org

Mrs. Jeana Davi (Math and Language Arts for students entering grades 1st, 3rd and 4th) email 2A@smarys.org

Mrs. Sarah Coffey (Math for students entering grades 7th and 8th) email 6B@smarys.org

Mrs. Debbie Van Pelt (Language Arts for students entering grades 6th and 7th) email 5A@smarys.org

Mrs. Mary Wendler (Math and Language Arts for students entering 5th and 6th grades) email mjetta2w12@gmail.com





FALL SPORTS NEWS

If you would like to register your child/ren for fall cross country, soccer, volleyball or 4th to 8th grade cheerleading please see the information below:

Cross Country – grades 3rd through 8th. Season begins in September and ends in October.

Intramural soccer - grades Kindergarten through 3rd. Soccer season runs for six weeks beginning in September and ending in October. Grades Kindergarten and 1st are scheduled to play on Tuesday nights and grades 2nd and 3rd are scheduled to play on Thursday nights.

Soccer - Junior Varsity – grades 4th and 5th

Soccer - Varsity – grades 6th, 7th, and 8th

The Junior Varsity and Varsity – grades 5th thru 8th soccer season begins in September and ends in November. **JV and Varsity soccer tryouts will be held on Wednesday, June 5th from 2:45 pm to 4:30 pm and on Thursday, June 6th from 2:45 to 4:30 pm on the school field.**

Volleyball – Junior Varsity – grades 5th and 6th

Volleyball – Varsity – grades 7th and 8th

Volleyball season begins in September and ends in October.

Mandatory Parent meeting (5th/6th grade - JV) Tuesday May 21st (6-7pm) followed by Mandatory Parent meeting (7th/8th grade - Varsity) at 7pm, in Science Lab.

Tryouts for JV will be held on Thursday May 23rd from 6:00 pm to 7:15 pm followed by Varsity tryouts from 7:15 pm to 8:45 pm in Assumption Hall.

Cheerleading – Please see sep. flyer for registration and tryout dates, in communication folder.

PLEASE SEND IN FORMS BY WEDNESDAY, MAY 22 (for Volleyball), Tuesday, June 4 (for Soccer) and Cheerleading by May 28. ATTENTION ROB LOGAN. FOR CURRENT STUDENTS IN GRADES 4TH THRU 7TH IF YOUR PHYSICAL IS NOT UNTIL THE SUMMER PLEASE DROP OFF TO THE OFFICE WHEN COMPLETED.

Registration forms are available on our website at www.smarys.org

ALL PLAYERS MUST SUBMIT ALL REQUIRED PAPERWORK, INCLUDING HEALTH FORMS AND PHYSICALS (FOR GRADES 5TH THRU 8TH), FOR EACH NEW SCHOOL YEAR. ALL FORMS MUST BE COMPLETED AND SUBMITTED TO THE SCHOOL BEFORE PLAYERS MAY ATTEND PRACTICES OR GAMES. ALL FORMS ARE AVAILABLE ON THE SCHOOL WEBSITE UNDER ATHLETICS.

Required Paperwork for grades Kindergarten to 4th – Registration Form, Registration Fee, Parent Code of Conduct, Player Code of Conduct, Sudden Cardiac Form, Concussion Form, and Health History Update.

Required Paperwork for grades 5th to 8th – Registration Form **(to be handed in prior to tryout)**, Registration Fee, Athletic Physical Evaluation Forms (4 pages to be completed – students are required to

be cleared by a physician), Parent Code of Conduct, Player Code of Conduct, Sudden Cardiac Form, Concussion Form and Health History Update.



NJ CAPE Council for American Private Education

"To promote the interests and betterment of private/nonpublic schools within the State of New Jersey"

Action Alert

ISSUE: The accounts for the nonpublic school community were level-funded by Governor Murphy in his Fiscal Year 2020 proposed Budget issued on March 5, 2019. His decision permits us to move forward on additional requests from the Legislature.

OUR POSITION: The New Jersey Council for American Private Education is asking for the following specific increases in the Fiscal Year 2020 Education Budget.

1. An increase from \$1,000.00 to \$1,040.00 for the per-pupil ceiling for nonpublic school transportation in order to provide opportunities for students to receive rides to school.
2. An increase from \$97.00 per pupil to \$125.00 per pupil for nonpublic school nursing services to provide additional hours for nurses in nonpublic schools and to cover the needs specified by recent legislation with respect to the requirements for improved student health.
3. An increase in the funding for Compensatory Education (remedial Reading, Mathematics, and Language Arts) from \$995.33 to \$1,100.00. The former figure is in Budget language and limits service providers to that amount.

ACTION: Call, email, or speak directly with legislators regarding these requests. Use the Talking Points that are included with this Alert to describe the problems and highlight the issues with your own school's experiences. ***This should be a repeated process continued until mid-June by all members supportive of nonpublic school education.***

School field trips to Trenton during the next two months should include materials delivered to key members of the Legislature (including the legislators in your respective districts). Please note the following:

1. The key members for contact are those legislators on the Senate Budget and Appropriations Committee and the Assembly Budget Committee. Particular attention should be given to the Democratic members because they have the power to submit Budget Modifications for final approval.
2. If legislators in your district do not sit on either Committee, please ask them to relay your concerns to a member of the Senate Budget and Appropriations Committee or the Assembly Budget Committee. The members normally are sensitive to those requests from their own constituents.

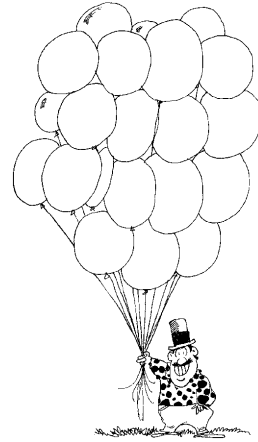
You may use the New Jersey Catholic Conference Faith in Action - Voter Voice system which can be accessed at:

<https://www.votervoice.net/NJCC/Campaigns/64955/Respond>

CARNIVAL 2019

St. Mary's Church/Our
Lady of Peace Parish
Carnival

June 24th to June 29th



WE NEED YOUR HELP!

As you know, the carnival is the largest fundraiser of St. Mary's Church/Our Lady of Peace Parish. Each night we need well over 100 workers to work the different booths, pick up supplies, sell raffle tickets, etc. We are also in need of (10) chefs per night to work the food booths. We are asking for your help. If you can work, please fill out the form below and drop in the offertory or return to the Parish Center or school. Your continued support of Our Lady of Peace Parish is greatly appreciated. Carnival hours are 6:00 PM to 10:00 PM Monday thru Friday and Saturday 6:00 PM to 10:30 PM.

Please note: You must be 18 years of age to work in a game booth.

Name: _____

Phone: _____

Email Address: _____

I would like to be a captain: (must be able to work all nights of carnival) _____

I can work:

Monday: _____

Thursday: _____

Tuesday: _____

Friday: _____

Wednesday: _____

Saturday: _____

**OUR LADY OF PEACE PARISH
32 CARROLL AVENUE
WILLIAMSTOWN, NEW JERSEY 08094**

May 2019

Dear Parents and Guardians:

As you know, our carnival will be held Monday, June 24th to Saturday, June 29th. There are many exciting things happening this year. Tuesday and Wednesday will be family night. Ride all rides from 6 PM to closing for \$25.00 per person.

We have Mega Passes for sale. A Mega Pass is \$40.00 per person before June 24th and \$45.00 per person beginning June 25th. A Mega Pass offers unlimited rides during **all** operating hours. You may buy your Mega Passes at the Parish Center or order through the school.

If you would like to order a Mega Pass, please fill out the form below and return to your child's teacher. Please make checks payable to Our Lady of Peace Parish. Thank you for your continued support to our biggest fund raiser of the year.

I would like to purchase:

_____ Mega Passes @ \$40.00 per person

Student's Name: _____

Parent's Name: _____

Phone: _____ Classroom: _____

Your Family is Invited to a Weekend Away on a Family Retreat

at St. Mary's of Providence Retreat House in Elverson, PA.

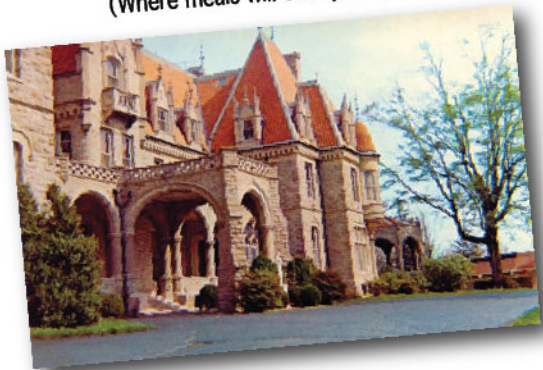
Friday, June 21st - Sunday, June 23rd

**Open to Families of ALL Ages! Spend a weekend together
growing in faith and love of one another.**

Some details of the retreat weekend:

- There will be talks, reflection time, Adoration, Mass, faith sharing and fun!
 - Fr. Quan will be saying Mass and hearing Confessions.
 - We will meet directly at the retreat house at 6pm on Friday, June 21st:
227 Isabella Road Elverson, PA and we will leave Sunday, June 23rd at 11:30am (no lunch)
(Please go to the back right side of the Mansion building. There you will find the 1 story building,
the Dalton House, which where we stay. The parking lot is on the back left side of that building.)
 - Each room has its own air conditioning unit, 2 twin beds & private bath.
 - There is room for sleeping bags, air mattresses or pack & plays on the floor.
(Plan for as many rooms as your family may need.)
- Price includes 3 meals on Saturday and breakfast on Sunday as well as accommodations.

St. Mary's of Providence Retreat House
(Where meals will take place)



2019 RETREAT PRICING

\$100 for adults (18 years and old)
FREE for children ages newborn-17years old

Space is limited.

**To reserve space for your family
please send in the below form and
\$25 non-refundable deposit per person 18 years or older**

**Please send into the OLOP Parish Office
attention: "Elaina Judge-Family Retreat"**

Name _____ phone # _____

adults attending _____ # children attending (ages 3-10 years old) _____

Total rooms Requested _____ Total enclosed (deposit is \$25 per adult 18 yrs & older. More can be given) \$ _____

The balance will be due by the retreat on Friday night, June 21st

*Please make checks payable to "Our Lady of Peace". Questions email: elainajudge@gmail.com

SUMMER WILL BE HERE SOON!
Register NOW for Vacation Bible School



JOIN US FOR A FUN FILLED WEEK OF VBS
A HEART FOR JESUS-LIVING THE BEATITUDES!

Our Lady of Peace Parish is proud to announce that we will be holding our

Sixteenth Annual Vacation Bible School

July 8th - July 12th

VBS will be held from 9 am to Noon each day (Friday from 9am to 1pm)
and is intended for children ages 4-10 (age as of **October 1, 2019**).

Registration is \$45 per child.

Please note that we are accepting *only* **100 children** so that we can
provide the highest quality of education, attention and fun!

For information or to obtain a registration form,

Visit www.OLOPP-VBS.org

Or contact **Karen Grant** at OLOPP.VBS@gmail.com or **856-262-3002**.

Registration forms can also be found on the racks in the entryway of the
church.

OLOPP --- VACATION BIBLE SCHOOL REGISTRATION



Our Lady of Peace Parish is excited to announce, our fifteenth annual Vacation Bible School -- **JULY 8TH - JULY 12TH**. VBS will be held from 9AM-12PM each day (Friday 9AM-1PM), and is intended for children 4-10 (age as of October 1, 2019). Please note that we are accepting **only 100 children** so that we can provide the highest quality of education, attention and fun!

The registration deadline is **June 10th**. Please note that registration forms received after the deadline will not be accepted. As we anticipate a huge response, **we are**

basing acceptance to the program upon the receipt date of the registration and tuition, which is \$45 per child*. Checks are to be made payable to **Our Lady of Peace Parish** and sent to or dropped off with the completed registration to:

Karen Grant
740 Tutor Lane Williamstown, NJ 08094
Attn: VBS
OLOPP.VBS@gmail.com

***Please note: Registration fees are non-refundable**

VACATION BIBLE SCHOOL - STUDENT REGISTRATION

(Please fill form out in entirety before submitting. Please print.)

Family information:

Last Name: _____ Parents'/Guardians' First Names: _____ & _____
Street Address: _____ City: _____ State: _____ Zip: _____
Phone Numbers: Home: _____ Work: _____ Cell: _____
Email: _____
Emergency Contact: Name: _____ Number: _____

Children information:

#1) Last Name: _____
First Name: _____
Nickname: _____
Birth date: _____
Grade entering in September: _____

Food Allergies: (check) Yes__ No__

Special Needs: (check) Yes__ No__

If yes, explain: _____

#2) Last Name: _____
First Name: _____
Nickname: _____
Birth date: _____
Grade entering in September: _____

Food Allergies: (check) Yes__ No__

Special Needs: (check) Yes__ No__

If yes, explain: _____

#3) Last Name: _____
First Name: _____
Nickname: _____
Birth date: _____
Grade entering in September: _____

Food Allergies: (check) Yes__ No__

Special Needs: (check) Yes__ No__

If yes, explain: _____

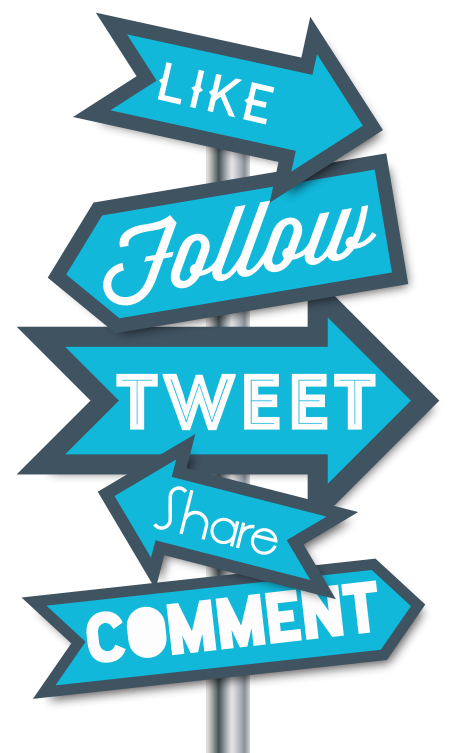
#4) Last Name: _____
First Name: _____
Nickname: _____
Birth date: _____
Grade entering in September: _____

Food Allergies: (check) Yes__ No__

Special Needs: (check) Yes__ No__

If yes, explain: _____

Amount Enclosed: _____



SOCIAL MEDIA SAFETY FOR TEENS

NetSmartz.org/TipSheets

THE FOLLOWING CHECKLIST CAN HELP YOU TAKE STEPS TO KEEP YOURSELF SAFER ONLINE.

○ CHECK YOUR COMMENTS AND IMAGES.

Have you posted anything inappropriate or illegal, like threats, nudity, alcohol, or drugs?

○ TALK TO YOUR FRIENDS ABOUT WHAT'S OK TO POST.

Agree that you won't post embarrassing or hurtful comments or images of each other. Be clear that you'll delete – or if needed, report – any posts that are inappropriate, illegal, or threatening or could get you in trouble.

○ REVIEW YOUR ACCOUNT SETTINGS.

Go through each option slowly. Always ask yourself – what is on my profile and who can see it?

○ KNOW YOUR FRIENDS, CONTACTS, AND FOLLOWERS.

These are the people who can see, share, and comment on what you post so you want to be sure you can trust them. Block and report anyone who makes harassing, threatening, or inappropriate comments.

○ KEEP AN EYE ON 3RD PARTY APPS.

Some of these apps will give companies access to your personal information. Always read the fine print before deciding to add one.

○ DON'T FORGET MOBILE.

When you use mobile devices like smartphones and tablets to post something or check in, you could also be sharing your location. Check your settings to make sure you're only sharing what you want to.

○ REPORT.

You have the right to be safe online. If anyone cyberbullies you, make a report to the website or app. If anyone shares or asks you to share sexual messages or images, make a report to www.CyberTipline.com.

A program of the



Copyright © 2014 National
Center for Missing & Exploited
Children. All rights reserved.

NetSmartz® Workshop

For more resources visit NSTEENS.ORG